



**PR<sup>PH</sup>ETIC**



# Pro LIVE

The Elevated Living Experience









# Residential spaces

Residential spaces refer to areas designed and used for living purposes. These spaces encompass various types of housing and living arrangements where people reside.

## Common types of residential spaces:

- Single-Family Homes
- Apartments
- Condominiums (Condos)
- Nuclear Family Houses
- Joint Family Houses
- Mobile Homes
- Co-housing Communities
- Dormitories
- Tiny Homes

# What do Residential Spaces Lack Today

## Inclusive design

Less Accessibility

Poor Lighting

Lack of safety

Inadequate ideas for terrace

Not for disableds

Less user engagement

Inadequate Signage

## Healthy life

Poor Indoor Air Quality

Lack of Natural Light

Low noise cancellation

Limited Physical Activity

Unhygienic Conditions

Ergonomic Issues

Thermal Discomfort

## Social support

Limited communal spaces

Isolation of living spaces

Inadequate privacy

Inflexible zoning

Poor connectivity

Limited diversity

Low gathering spaces

# Our idea on quality of life

Through thoughtfully crafted design implications, the concept helps users to fulfill their **needs** and **desires**.

The idea works to offer quality of life by creating:

- Multy- Functional
- Healthy environment
- Interactive spaces







# Introduction

Pro LIVE is a design concept for residential spaces focusing on 360-degree research-driven well-being of the user and providing an **'elevated lifestyle'**.



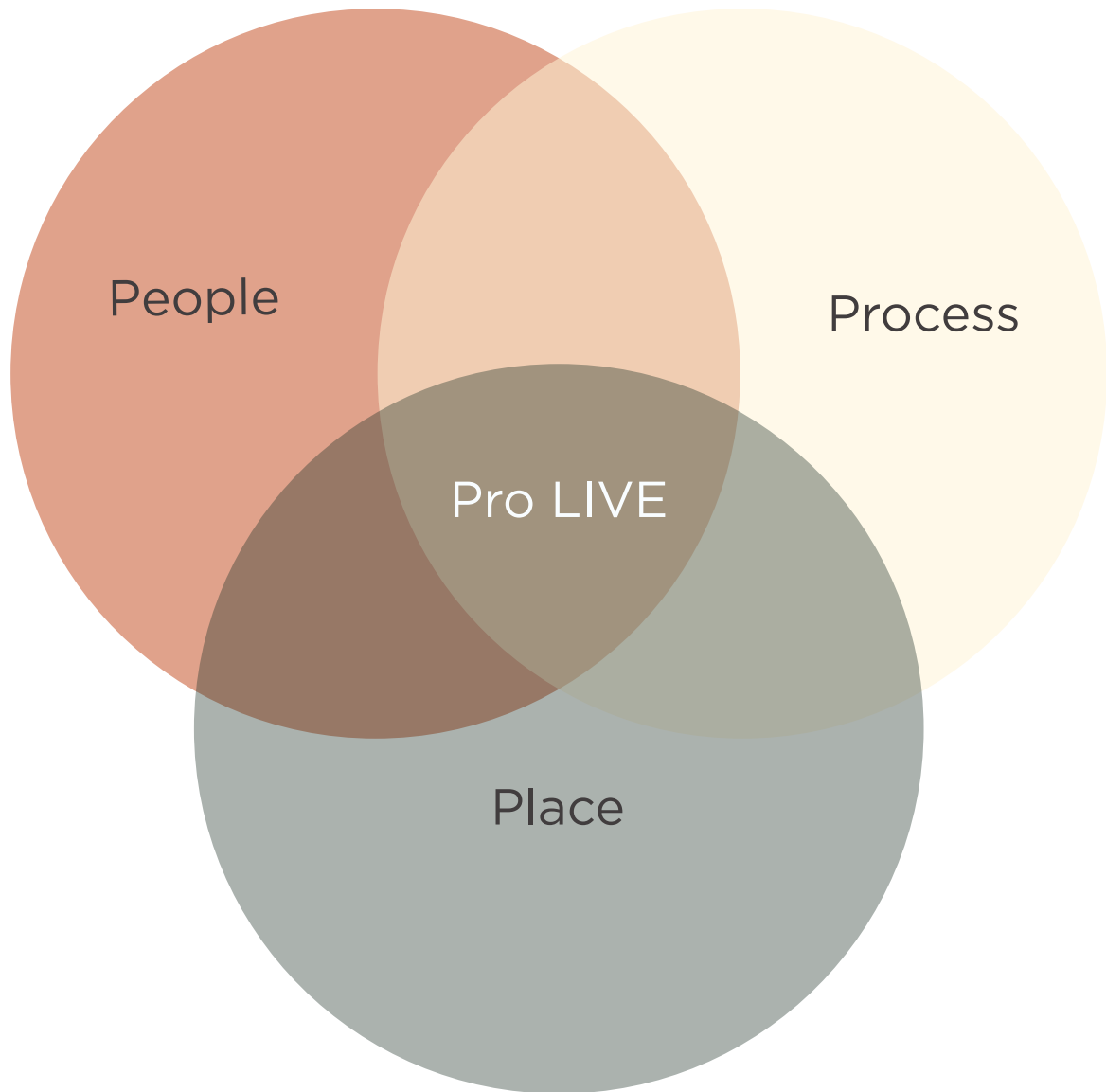
# Pro LIVE

3 major points that identified  
through these points

- Overall well-being
- Functionality
- Elevated experiences

Overall combined  
impact of these 3 points:

Pro LIVE integrates social consideration, sustainability, functionality, and well-being in residential architecture to enhance the **quality of life** for all residents.



# The way we work to create a good living

To elevate the living experience, the idea works by involving three key factors of design:

## 1. **People:**

- 7 orbital user map

## 2. **Process:**

- Primary activity
- Secondary activity
- Tertiary activity

## 3. **Place:**

- User identity
- Architecture data
- Surrounding

# People

Core user

Elderly  
Children  
Pets

Guests

Staff

Neighbours

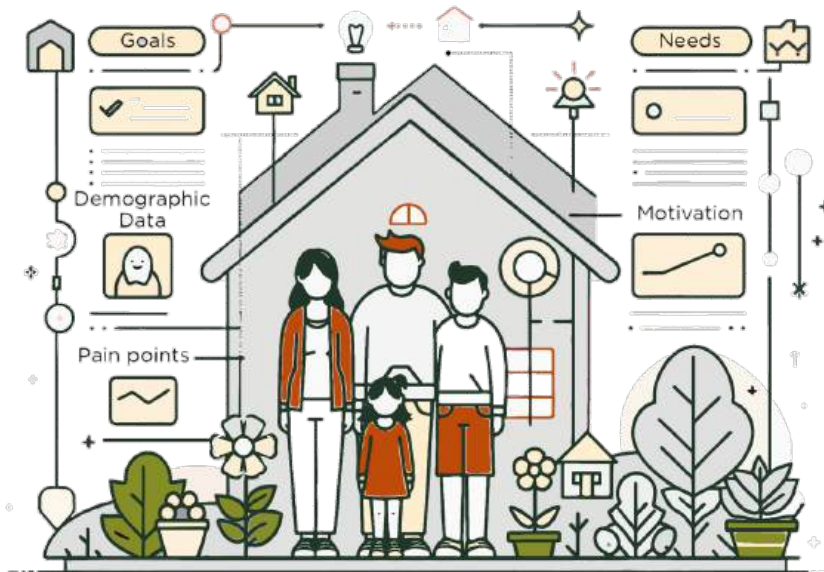
Service  
providers

Emergency  
responders



# Discovering people

Pro LIVE involves mapping seven distinct user orbits to understand behaviours within spaces. Each user's activities are important for critical observation and planning, mapped in daily, weekly, monthly, and yearly routines.

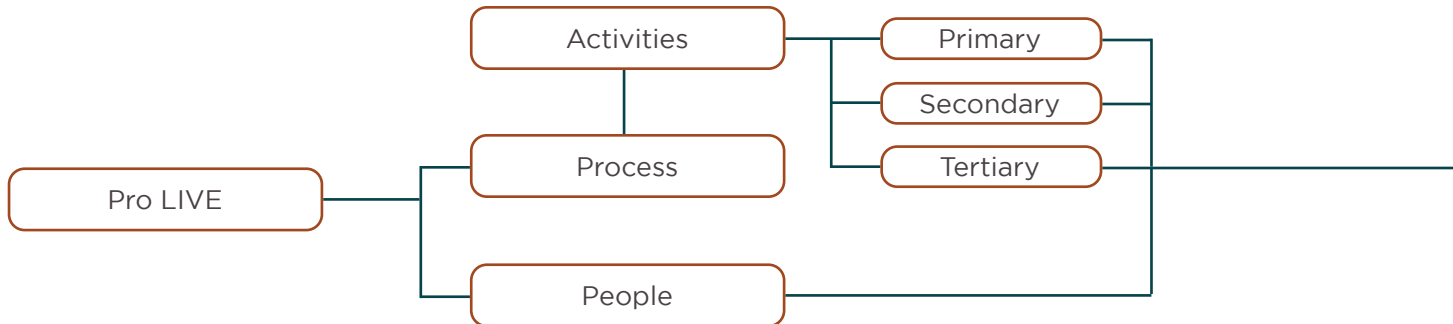


# Process

- Pro LIVE thinking involves mapping seven distinct user orbits to understand behaviours within spaces.
- Each user's activities are important for critical observation and planning mapped in daily, weekly, monthly and yearly routine.
- By identifying these behaviours, architects can design spaces to accommodate the diverse needs of occupants effectively.

And three categories of activities are classified as

1. Primary (Routine)
2. Secondary (Weekend)
3. Tertiary (Temporary)



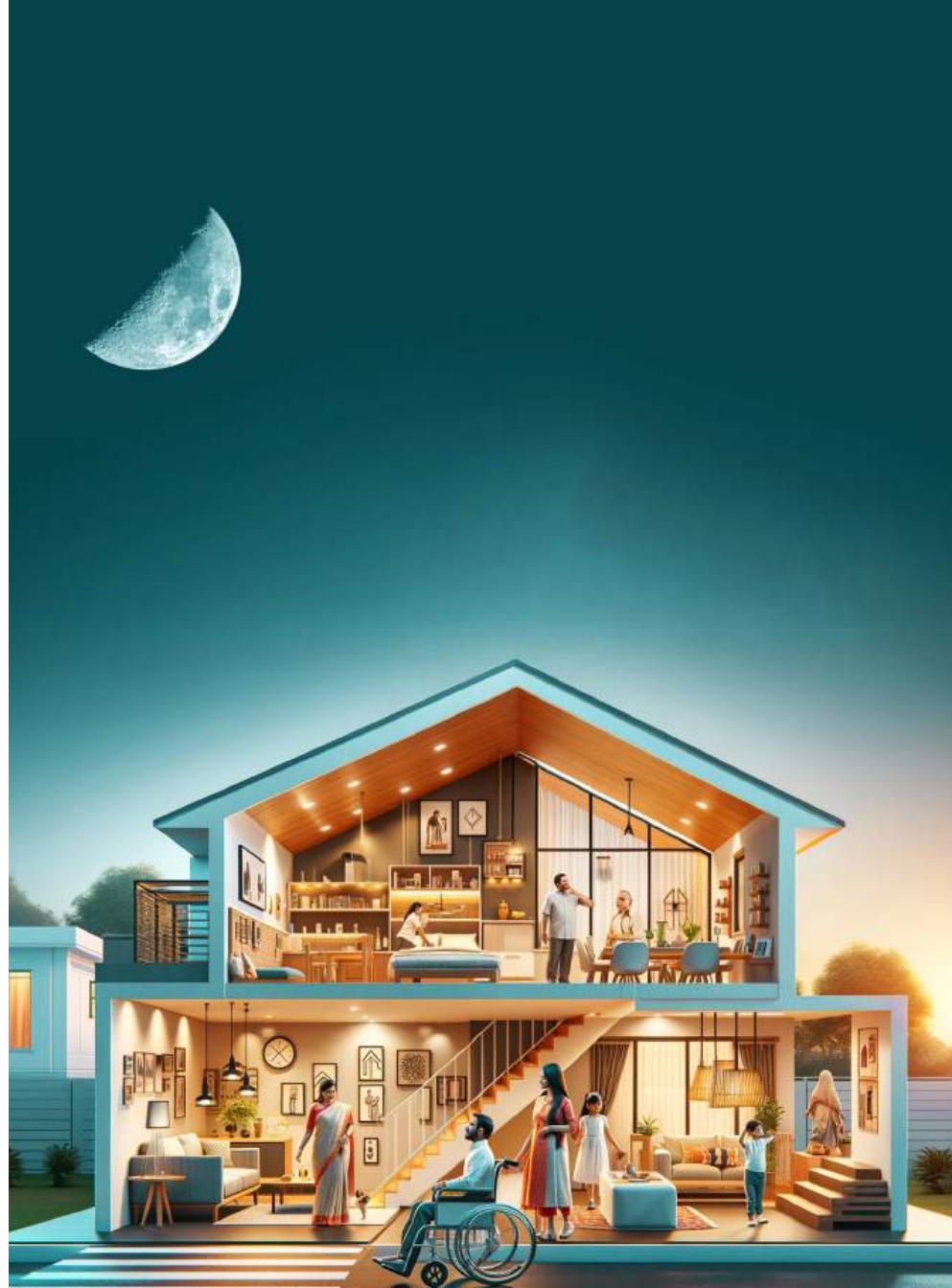
Through the design process we identify these data for the user:

- Scale
- Circulation
- Type of functions
- Type of spaces
- Accessibility
- Total required area

Capacity of space

Engagement time

Facility requirement



# Place

## Types of surroundings

The environment affects human senses and subconscious mind. Types of surroundings include.

- Natural Environment
- Built Environment
- Social engagement
- Regulatory framework
- Demographic study
- Psychological Environment
- Safety and Security Environment



# **At Pro LIVE, we are committed to shaping sensories and their feed.**

## **Subconscious:**

- Spatial orientation navigation
- Temporal
- Cognitive

## **Sensory experience:**

- Vision
- Hearing
- Smell
- Touch

# **We deliver residential spaces according to these factors**

Architectural and Design Elements

Aesthetic Considerations

Engagement and Collaboration

Sustainability stewardship

Environmental integration

Accessibility Features

Well-Being and Comfort







**Pro LIVE focus as a  
involvement of the  
people**



Decorative lighting

Decorative element





Wall texture

Material finish

Visual transparency

Comfortability

Fabric texture

Indoor plants

Material experiment

Sound proofing

Sound proofing

Material finish

Decorative lighting

Comfortable sleep

Textile finish

Rug element

Flooring finish













Decorative lighting

Sound proofing

Accessibility

Decorations

Ergonomic design

Material finish

Jali element

Rug element

Flooring finish

# What we offer

Architectural and Design service

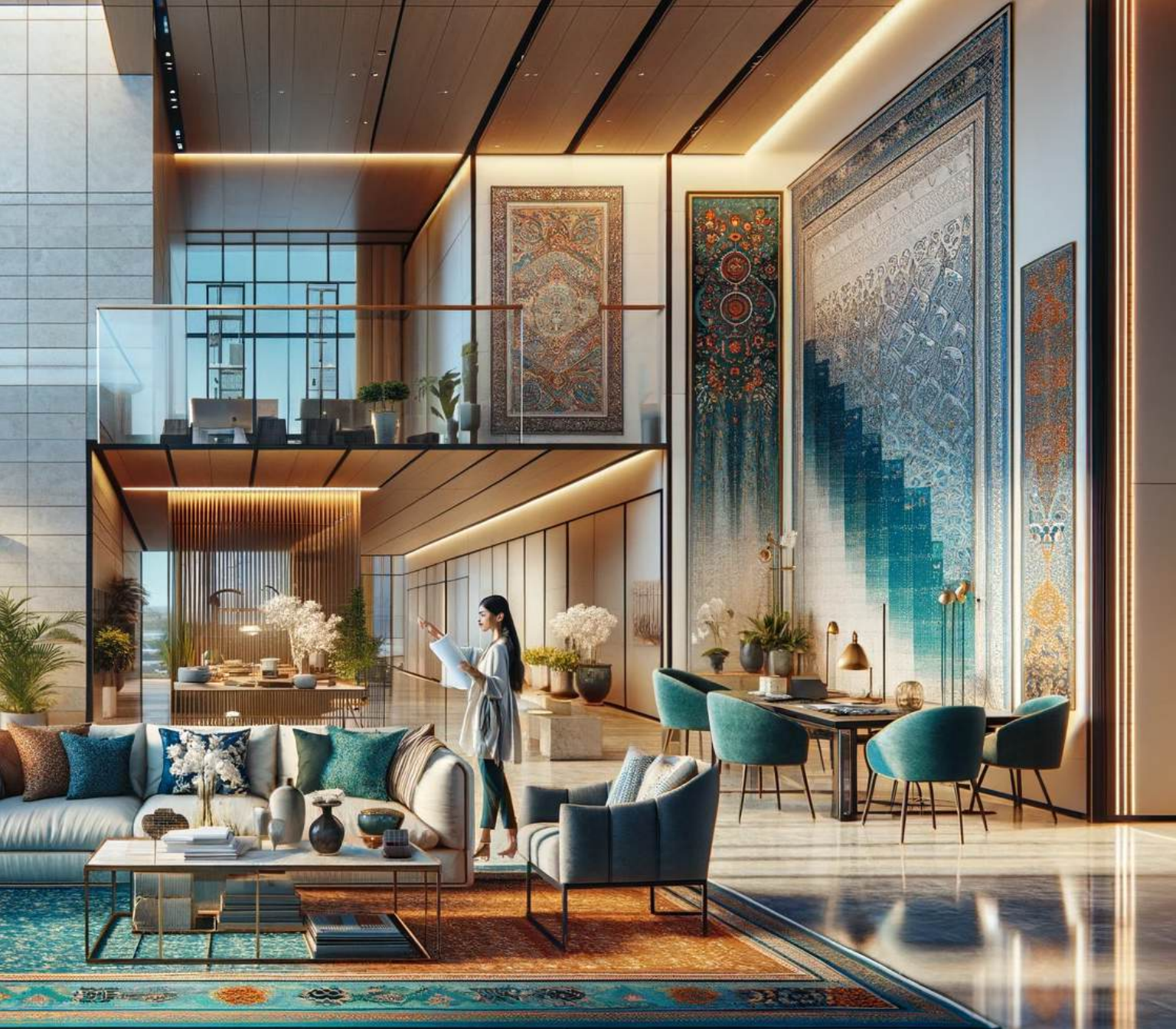
Interior design service

Landscape design service

Project management consulting

Project execution







# Our Team



**Navratan Sharma**  
Director



**Shweta Bhardwaj**  
Senior Interior designer



**Ajayraj Nayak**  
Project manager



**Arpita Meda**  
Junior Interior designer



**Hiral Jain**  
Architect



**Vikas Goswami**  
Civil engineer



**Amisha Ganeshe**  
Junior Interior designer



**Namita Soni**  
3D visualizer



**Vishv Naik**  
Civil engineer



**Abhijeet**  
Civil engineer



**Malhar S. Chaudhari**  
Design strategist



## **Get in touch**

info@propheticindia.com  
+91-9039056176

